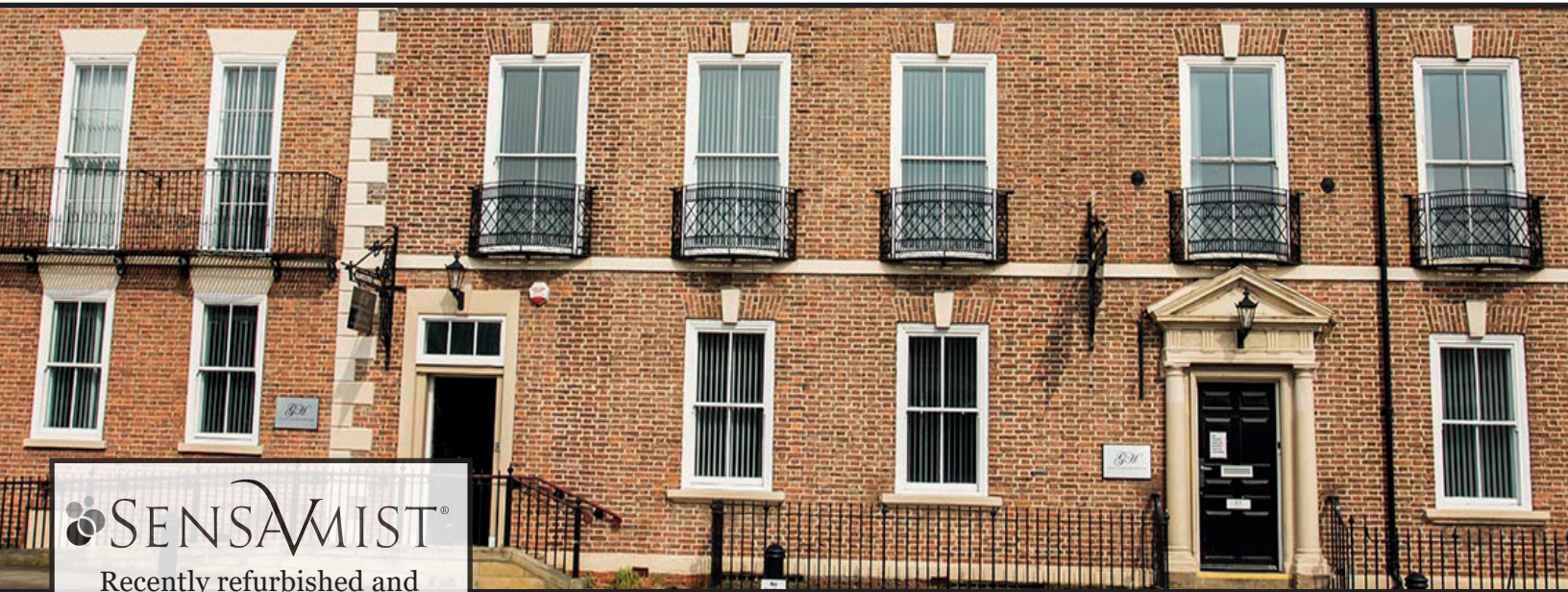


# CASE STUDY

Gloucester House chooses SensaMist® Scent Diffusers



## SENSAMIST®

Recently refurbished and transformed into serviced offices, Gloucester House offers 42 office suites ranging from single desk provisions to large-scale open plan offices across three floors.

**The historic building – described as a ‘jewel in the crown of the town’s business community’ – was bought and developed by its current owner Jeff Highfield.**

**Jeff was searching for an effective fragrance solution to replace a system that just wasn’t working out.**

He chose SensaMist®.



S80 | S100

S250

Gloucester House is a beautiful 250 year old Grade 2\* listed building based in the heart of Stockton-on-Tees, in the North of England.

Local businessman Jeff Highfield grew up in Stockton and wanted to be part of the ongoing regeneration of the area, and to give something back to the community. It was therefore important that everything was done to the highest of standards.

To appeal to both staff and visitors, the ‘magic’ of scent was an important factor in a communal building of this age and size. In an office setting, a fresh fragrance can replace musty odours and food smells – but it can also offer an inviting environment and ‘experience’ that will stimulate positive emotions and create lasting impressions.

Jeff wanted something that didn’t need constantly replacing – so refills that lasted longer and that were easier to re-fill.

The dispensers needed to be programmable so that he could fully control the output. They also needed to look appealing and blend in with the beautiful building.

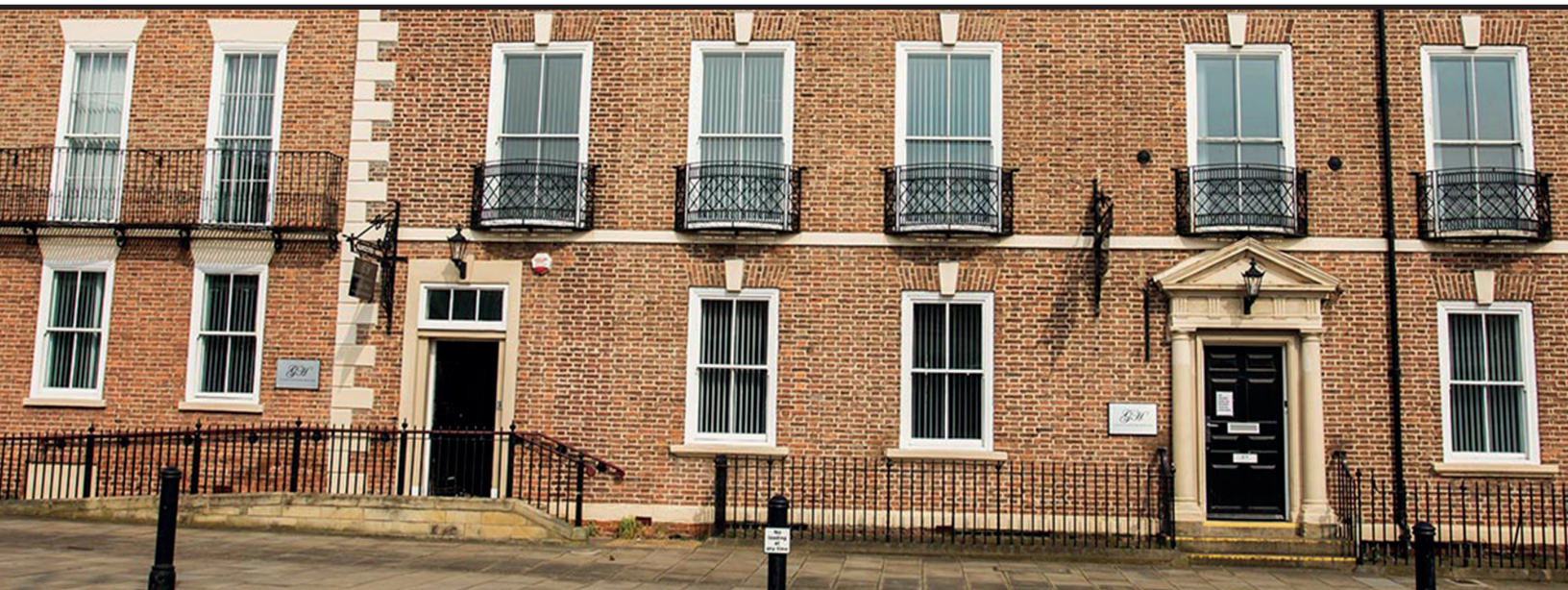
During his search, he came across Vectair Systems and in particular the SensaMist® range of scent diffusers. The SensaMist® scent diffusers utilise advanced atomizer technology to create a fine mist of fragrance which is then diffused into the environment.



Jeff wanted to fragrance different areas across the whole building so three different SensaMist® models were required depending on their coverage in terms of output, and their type of operation (battery or powered).

# CASE STUDY

Gloucester House chooses SensaMist® Scent Diffusers



Jeff chose the SensaMist® S80, S100 and S250 scent diffusers. These smart looking diffusers can fragrance areas from 80 cubic meters (S80) to up to 200-300 cubic meters (S250 and S100 respectively).

To ensure fragrance works in harmony across the whole building, each of the scent diffusers contain the same Zen Garden fragrance oil, with key notes of rose, jasmine, apple and melon.

Jeff says: "The Zen Garden fragrance has been widely well received and if the fragrance does get too strong, we have the ability to turn it down. After my initial order of dispensers I have since ordered more."

All SensaMist® Scent Diffusers utilise advanced atomizer technology to create a fine mist of appealing fragrance.



To fragrance smaller areas like the toilets and corridors, where power or hard wiring isn't easily available, the SensaMist® S80 – which is battery operated and covers up to 80 cubic metres – was the perfect choice.

While it looks identical to the S80, the SensaMist® S100 is a wall mounted, powered scent diffuser that fragrances areas up to 300 cubic metres, so Jeff placed it at the top of the main stairs to maximise coverage.

Jeff chose the SensaMist® S250, a smart looking diffuser specifically for areas up to 200 cubic metres, for the main reception area and conference room. The unit is powered and stands alone on the floor.

## *"SensaMist® fit the bill"*

*"Prior to installing Vectair's SensaMist® diffusers, we were constantly replacing aerosol canisters in our existing dispensers - they just didn't last long enough. Because we have to refill dispensers ourselves, we needed longevity and SensaMist® fit the bill. Rather than a few days, each SensaMist® refill lasts a few months and when they do run out, the oil is much easier to replace." Jeff Highfield, Owner, Gloucester House*

